

RLF-2115-UNI

2" LED MINIATURE TRIMMED
RECESSED DOWNLIGHT



| |
|--------------|
| Fixture Type |
| Project |
| Notes |



LED Miniature Recessed Downlight with Interchangeable Reflector and Trim series is designed for residential and commercial spaces. White trim and white reflector are included. Optional trims in round and square in a variety of finishes and reflectors in black and haze. No housing is required for remodel applications. Mounting frame with hanger bars optional for New Construction applications and remote driver is included. Power supply rated for feed through wiring.

| | | | | | | | | | | |
|---------------|----------------|---------------|----------|----------|----------------|---------|------------------------|-----------------------|------------------------------|-----------------------------------|
| 120 - 277V AC | 0-10V DIMMABLE | RECESSED TRIM | IC RATED | AIRTIGHT | 2 7/8" CUT-OUT | IND OOR | L70 50,000 HOURS | 5 YEAR WARRANTY | ETL [®] US Intertek | T24 California TITLE 24 COMPLIANT |
|---------------|----------------|---------------|----------|----------|----------------|---------|------------------------|-----------------------|------------------------------|-----------------------------------|

SPECIFICATIONS

| | |
|----------------------------|----------------|
| INPUT VOLTAGE | 120-277V AC |
| WATTAGE | 15 W |
| LUMENS | 1000 Lm |
| EFFICACY | 67 Lm/W |
| CRI | 90+ |
| BEAM ANGLE | 38° |
| DIMMING¹ | 0-10V Dimmable |
| CUT-OUT | 2 7/8" Ø |

| | |
|-----------------------------|---|
| RATINGS | IC, Airtight |
| ENVIRONMENT | Indoor Wet* |
| CERTIFICATIONS | cETLus, T24Compliant |
| LUMEN MAINTENANCE | 50,000 hours |
| INCLUDES | White trim and white reflector, remote driver |
| OPTIONAL | Universal mounting plate |
| WARRANTY² | 5 years |

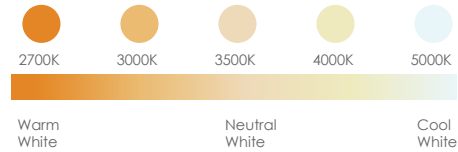
¹ Effectively dim down to 10%
² See published warranty terms for detailed information

* Wet with RLT-2109 Trim

PERFORMANCE

CCT selectable

| COLOR TEMPERATURE ³ | LUMEN ⁴ | WATTAGE | EFFICACY | CRI |
|------------------------------------|--------------------|---------|----------|-----|
| SW5 (27/30/35/40/50K) ⁵ | 1000 Lm | 15 W | 67 Lm/W | 90+ |



³ & ⁴ CCT within +/-10%
⁵ Switchable CCT

ORDERING INFO

STEP 1 - Light Engine with LED, Reflector & Trim



MODEL
RLF-2115-UNI-SW5-WHWH

2" aperture LED recess downlight with 38 degree beam spread assembled with standard matte white reflector and matte white round trim

STEP 2 - Optional Trim (sold separately)



MODEL
RLT-2101-BK - Round Black Finish Trim
RLT-2105-WH - Wall Wash White Finish Trim
RLT-2106-BK - Square Black Finish Trim
RLT-2106-WH - Square White Finish Trim
RLT-2109-WH - Round Shower White Finish Trim
RLT-2114-WH - Pinhole White Finish Trim

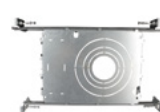
STEP 3 - Optional Reflector (sold separately)



MODEL
RLF-21-REF-BK - Black Finish Reflector
RLF-21-REF-HZ - Haze Finish Reflector

OPTIONAL ACCESSORY

(Sold separately)



MODEL
RLH-23354-NC-UNI
Universal mounting plate with hanger bars.
For cutout sizes: 2 1/8", 2 7/8", 3 3/4" or 5 1/4"

RLF-2115-UNI

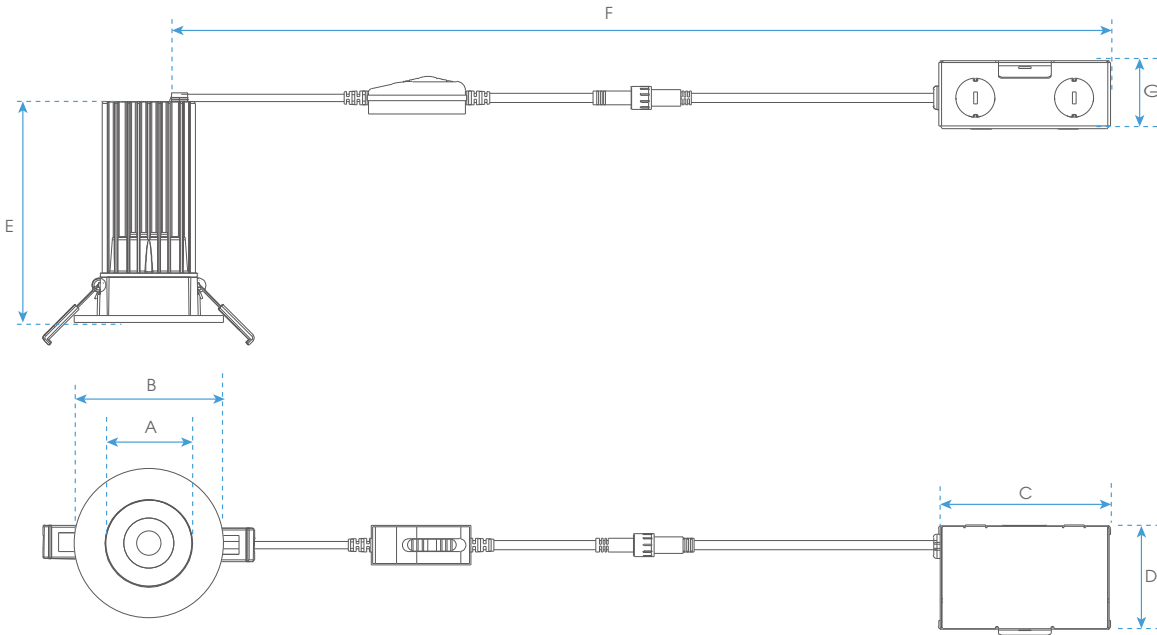
2" LED MINIATURE TRIMMED
RECESSED DOWNLIGHT



| |
|--------------|
| Fixture Type |
| Project |
| Notes |

TECHNICAL DRAWING

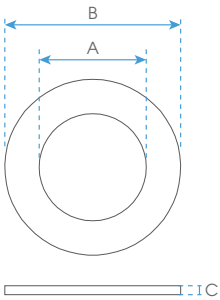
LIGHT ENGINE WITH REFLECTOR AND TRIM INSTALLED



DIMENSIONS

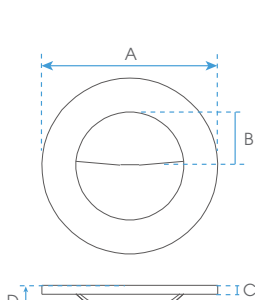
| | | |
|---|--------|-------|
| A | 2" | 51mm |
| B | 3 1/8" | 80mm |
| C | 3 7/8" | 98mm |
| D | 2 1/2" | 64mm |
| E | 5" | 126mm |
| F | 17" | 430mm |
| G | 1 1/2" | 39mm |

OPTIONAL TRIMS



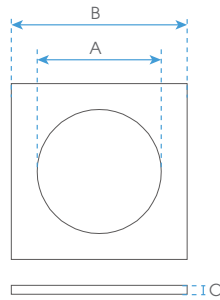
RLT-2101 TRIM
RLT-2109 TRIM

| DIMENSIONS | | |
|------------|--------|-------|
| A | 2" | 51 mm |
| B | 3 1/8" | 80 mm |
| C | 3/16" | 4 mm |



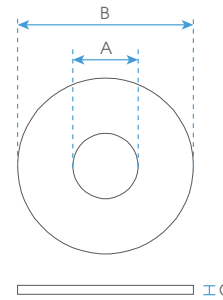
RLT-2105 TRIM

| DIMENSIONS | | |
|------------|--------|-------|
| A | 3 1/8" | 80 mm |
| B | 1" | 25 mm |
| C | 3/16" | 4 mm |
| D | 1/2" | 14 mm |



RLT-2106 TRIM

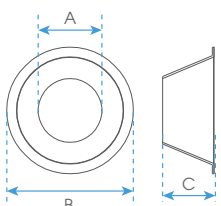
| DIMENSIONS | | |
|------------|--------|-------|
| A | 2" | 51 mm |
| B | 3 1/8" | 80 mm |
| C | 3/16" | 4 mm |



RLT-2114 TRIM

| DIMENSIONS | | |
|------------|---------|-------|
| A | 1 3/16" | 30 mm |
| B | 3 1/8" | 80 mm |
| C | 3/16" | 4 mm |

OPTIONAL REFLECTOR



DIMENSIONS

| | | |
|---|--------|-------|
| A | 1 1/4" | 31 mm |
| B | 2 1/4" | 58 mm |
| C | 1" | 25 mm |